



itt

*Sustainable Transport
Infrastructure Solutions*

Consultancy firm based in the UK, **specialising in the development and improvement of transport infrastructure** in developing countries.

ABOUT ITT

I.T. Transport Limited (ITT) has been providing consultancy services since its establishment in 1979, focused on, and appropriate to, the needs of the transport, infrastructure and development sectors in developing countries. ITT is based in the UK and is committed to delivering high quality projects that leave a lasting legacy in the countries they work in. ITT works with various bilateral and multilateral donors, private firms and government agencies, to improve the transport sector in developing countries. ITT has successfully carried out over 900 assignments in more than 40 developing countries and has extensive experience in Caribbean and Sub-Saharan Africa – with over 70% of ITT's projects being in these two regions. ITT has the expertise and experience to confidently formulate and execute large and small projects from their initial conception, through to their completion.

ITT believes that sustainable transport infrastructure and services are crucial to social and economic development. In all undertakings ITT's approach goes beyond the technical aspects of the work, working in close partnership with institutions, governments, communities and local firms/experts to build on their capabilities and capacities, and to ensure sustainable and successful long-term outcomes. This is accomplished with the understanding that every project is different, with specific social, economic and environmental concerns that must be acknowledged and require a tailored and unique delivery approach, which embodies an understanding of the local needs and opportunities. This ensures that ITT's clients and other stakeholders achieve sustainable benefits, and are ultimately successful in alleviating poverty, stimulating trade and creating wealth.

ITT is a leader in the implementation of practical and sustainable initiatives which leverage technological advancements to improve access and mobility, with the goal of social and economic development. Evidence for this can be found in the pioneering role it has played in the evolution and international acceptance of the concept of access-stimulated wealth creation, and the design of related projects.



Our broad **areas of expertise** include:



INSTITUTIONAL/ ORGANISATIONAL REFORM

- Setup of specialised organisations
- Diagnostic Reviews
- Institutional Strengthening
- Prioritisation of Interventions
- Policy Formulation



ROAD/ INFRASTRUCTURE FINANCING AND INVESTMENT

- Road Funds Development
- Prioritisation of Investments
- Private Finance Initiatives (PFIs) / Public Private Partnerships (PPPs)



ROAD ASSET MANAGEMENT

- Policy Frameworks and Strategy
- Road Management Systems
- Planning and Prioritisation
- Performance Monitoring
- Road Inventory and Condition Surveys



ROAD SAFETY

- Policy Formulation and Prioritisation
- Road Safety Audits
- Road Safety Action Plans
- Data Collection
- Road Infrastructure Safety Assessments



CAPACITY BUILDING AND TRAINING

- Capacity Needs Assessment
- Development of Training Curricula
- Counterpart Mentoring
- Knowledge Transfer and Management



RURAL ACCESS AND TRANSPORT SERVICES

- Service Provision Strengthening
- Rural Road Maintenance
- Research and Development
- Assessment of Mobility Needs
- Policy and Strategy Development



CROSS-CUTTING ISSUES

- Feasibility studies
- Socio-Economic Impact Assessments
- Climate Resilience
- Gender Mainstreaming

OUR TEAM

At the heart of our global operations is our dedicated team of Core Staff whose profiles you can see below. They are supported by our Business Development, Administration, Finance, Travel, Security and Compliancy teams. Globally, we have a large pool of associated consultants and experts whom we reach out to when needed, many of whom we have worked with ITT for years. This ensures we have high quality personnel deployed on all of our projects at all times.



Andy McLoughlin
MANAGING DIRECTOR

Andy McLoughlin is the Managing Director of I.T. Transport Ltd, and has over 20 years of experience working in the transport sector, predominantly in Africa and Latin America & the Caribbean. He is a Chartered Civil Engineer (CEng) and holds a BSc (Hons) in Geology from the University of Manchester (UK), and an MSc in Road Management and Engineering from the University of Birmingham (UK). At ITT, Andy is responsible for providing leadership and developing the strategic direction of the company, with overall responsibility for business development and wider organisational performance. He is experienced in several transport-related disciplines, including road safety, asset management, transport planning, civil engineering, capacity building, and wider institutional reform in the transport sector.



Dick Komakech
DIRECTOR

Dick Komakech is a Director at I.T. Transport Ltd and has over 20 years of experience in the planning, design, implementation and sustainable management of transport infrastructure projects predominantly in Africa and Latin America. He holds a BSc Civil Engineering degree from Makerere University (Uganda) and an MSc Transport degree from Imperial College London (UK). At ITT, Dick is responsible for overall project implementation and has successfully delivered a number of long-term assignments as the Team Leader. Dick is experienced in road asset management, transport planning, rural access and transport services provision, research and road infrastructure financing and investment.



Henry Nkwanga
DIRECTOR

Henry Nkwanga is a Director at I.T. Transport Ltd and has over 15 years of experience in highways and transportation working as a UK-based consultant and international development expert. He is a UK Chartered Engineer (CEng) and holds a BSc Surveying degree from Makerere University (Uganda) and an MSc Road Management and Engineering degree from the University of Birmingham (UK). At ITT, Henry leads on Operational Management and Technical Delivery, covering a range of transport infrastructure-related projects in multiple countries around Africa and Latin America. Henry's core competencies include business development, project formulation, project management, designing and undertaking transport sector research, transport Infrastructure asset management, pavement engineering, institutional reform and capacity building.



Chege Kinuthia
SENIOR CONSULTANT

Chege Kinuthia is a Senior Consultant and Project Manager at I.T. Transport Ltd, working on projects for a variety of clients and donors. He has worked as an international development professional in the transport sector for the last six years and has experience in the management of transport infrastructure projects in developing countries. Chege holds a Master in Economics (Cooperation and Human Development) and Bachelor in Economics and Finance from Kenyatta University in Nairobi. Chege's responsibilities include setting up, mobilising and managing operational logistics for project teams, coordinating liaison between project team members, clients and funding partners, managing work plans and budgets, supporting technical delivery of projects and helping the internal technical audit process for project deliverables. He also leads Business Development activities, including the identification and evaluation of bid opportunities, preparation of Expressions of Interest, and preparation of financial and technical proposals.



Robert Oyoo
SENIOR ENGINEER

Robert Oyoo is a Senior Engineer at I.T. Transport Ltd and has over 8 years' work experience in the transport sector in Africa. He is a Registered Professional Civil Engineer with the Engineers Board of Kenya (EBK), a Corporate Member of the Institution of Engineers of Kenya (IEK) and a Member of the Chartered Institution of Highways and Transportation (MCIHT, UK). He holds a BSc (Hons) in Civil Engineering and MSc in Civil Engineering (Transportation Engineering) from the University of Nairobi (Kenya). At ITT, he is responsible for civil engineering-related business development activities and provides input in technical areas relating to road safety, road and bridge asset management and other engineering projects. He has worked previously as a highways and road safety engineer in road development projects. As a master trainer, he has coordinated capacity building initiatives on appropriate technologies for labour based road construction and maintenance in Kenya.



Francésa R. Bholaramsingh
LEGAL AND BUSINESS
ENGAGEMENT
PROFESSIONAL

Francésa R. Bholaramsingh is a Legal and Business Engagement Associate for I.T. Transport with experience working across legal, regulatory, and development projects in both the public and private sectors. She has supported initiatives in the UK, Guyana, and the wider Caribbean and South American regions, with a focus on legal advisory, contract management, regulatory compliance and business development. Francésa holds an LLM in International Law, and an LL.B from the University of Guyana. She has worked on legal and development programmes involving mining, vocational training, immigration, land-use negotiations, and cross-border investment. Her responsibilities include managing legal and compliance frameworks, supporting policy development, conducting regulatory risk assessments, and reviewing high-value contracts. She has also advised on anti-money laundering (AML) procedures and data protection compliance across international operations.

In addition to legal work, Francésa supports project operations by coordinating stakeholder engagement, overseeing documentation systems, and contributing to internal governance and quality assurance processes. She is actively involved in business development tasks, including drafting proposals, conducting legal research for bids, and advising on compliance aspects of project design and delivery.



Eden Muluken
PROJECT ACCOUNTANT
AND ADMINISTRATOR

Eden Muluken is a Project Accountant and Administrator at I.T. Transport Ltd, with a solid academic and professional background in finance, administration, and project coordination. She holds a Bachelor's degree in Accounting and Finance from Unity University and a Master's degree in Business Administration from Maryland International College, both in Ethiopia.

With over five years of progressive experience, Eden has established a strong record in financial management, budgeting, and administrative support. She started her career as a Senior Accountant in the finance sector, where she gained comprehensive experience in financial reporting, budget planning, and regulatory compliance.

Since 2023, Eden has served as a Project Accountant and Administrator, overseeing project finances and managing key administrative functions for ITT Business in Ethiopia. Her role requires close collaboration with technical teams and clients to ensure the effective implementation of project activities and compliance with financial and operational standards.



Mumba Nkandu
CONSULTANT

Mumba is a Consultant at I.T. Transport, holding a B.Tech in Civil Engineering and bringing five years of diverse experience to her role. She has completed projects in Zambia demonstrating her experience in project management and effective collaboration with teams. Mumba is proficient in software such as AutoCAD, which enhances her ability to understand designs and contribute to construction projects. She is a proud member of the Engineering Institute of Zambia (EIZ). In her position at ITT, she actively contributes to business development by assisting in the preparation of proposals and Expressions of Interest (EOIs). She is also actively involved in project management—providing backstopping support and ensuring technical delivery of ITT projects.



Karen Barongo
JUNIOR CONSULTANT

Karen Barongo is a Junior Consultant at I.T. Transport Ltd. She has more than 9 years of experience in the Procurement and Administration field, with experience in building supplier databases for Clients, managing office operations, and supporting staff. Karen holds a Bachelor's Degree in Procurement and Logistics Management from Tanzania Institute of Accountancy. Her responsibilities at ITT include supporting management of projects by setting up, mobilising and managing operational logistics for project teams, as well as supporting Business Development activities, including the identification and evaluation of bid opportunities, preparation of Expressions of Interest, and preparation of technical and financial proposals.



Rachael Karimi
JUNIOR CONSULTANT

Rachael Karimi is a Junior Consultant at I.T. Transport Ltd with experience in socio-economic research, environmental assessments, and data-driven project support. She holds a Bachelor of Science in Economics and Statistics from Chuka University, Kenya. At ITT, she supports business development and project management through proposal writing, Expressions of Interest, and stakeholder engagement. She is passionate about advancing inclusive and sustainable transport solutions across Sub-Saharan Africa and globally, with a focus on improving access, resilience, and equity through context-driven development.



OUR PROJECTS

ITT has successfully carried out over 900 projects in more than 40 developing countries. Below we have provided some examples of our recently completed (last 5 years) and live projects which demonstrate our technical and geographical areas of expertise. You can find more project information on our [website](#).



CARIBBEAN & LATIN AMERICA

- Guyana National Road Safety Diagnostic and Action Plan (2022-2026) - **Guyana**
- Formulation of a legal & Institutional Framework for implementation of Parking Policy - **Suriname**
- Prioritisation of Interventions for the Ministry of Transport, Works and Maintenance – **Barbados**
- Institutional Strengthening Study for Management and Maintenance of Public Roads – **Belize**
- Comprehensive Restoration and Sustainable Conservation Management Plan for City Hall – **Guyana**
- Organisational, Institutional, Technical and Financial Review of the Road Authority – **Suriname**



CONTINENTAL

- Acquisition and Customisation of a Corridor Performance Monitoring System for the Dar es Salaam Corridor Committee – **Tanzania, Zambia, Malawi & DRC**
- Analysis of Multiple Deprivations in Secondary Cities in Sub-Saharan Africa – **Kenya, Ghana & Zambia**
- Applied Research Programme in High Volume Transport (HVT): State of Knowledge Paper – **Sub-Saharan Africa and South Asia**
- Research for Community Access Partnership (ReCAP) – **Sub-Saharan Africa and South Asia**
- Gender Action Plan and Value Chain Analysis of Transport Infrastructure Provision, Operation and Services – **Bahamas, Panama, El Salvador, Honduras, Argentina, Peru, Ecuador, Costa Rica, Brazil, and Colombia**
- Evaluation of African Development Bank's Assistance in the Transport Sector – **Burkina Faso, Djibouti, Ghana, Mali, Namibia, Nigeria, Rwanda, Tanzania and Tunisia**
- Mobilising Private Finance for Road Safety – **Global**
- Systematic Review – Does the Extension of Rural Network have a Positive Impact on Poverty Reduction and Resilience for Rural Areas? – **Global**



SOUTHERN AFRICA

- Performance Review and Development of Turnaround Strategies for Zimbabwe National Road Administration (ZINARA) - **Zimbabwe**
- Development of a Bus Stop/Shelter Strategy and Bus Network Review for Windhoek – **Namibia**
- Development of a Road Asset Management Framework (RAMF) – **Namibia**
- Technical Assistance, Road Sector Reforms Service – **Eswatini**
- Diagnostic Study for the Beira and Nacala Corridors – **Mozambique**
- Feasibility Study for the Rehabilitation and Management of Ressano – Garcia Railway Line – **Mozambique**
- Final Re-measure of Quantities for 3 towns Water Supply Project – **Lesotho**



EAST AFRICA

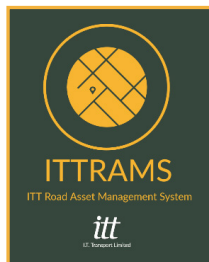
- Impact Assessment of Investment in Roads Sub-Sector – **Kenya**
- Development of Urban Roads Maintenance Strategy – **Kenya**
- Road User Charges Study and Development of a Road Maintenance Funding Policy – **Kenya**
- Road Improvement Works (R2000) – **Kenya**
- Piloting of Enhanced Enforcement of Road Safety and Post - Crash Care – **Ethiopia**
- Cities and Infrastructure for Growth (CIG) – **Uganda**
- Road Safety Audits - 110km of upgraded roads around Kampala – **Uganda**
- Improvement of a Roads Maintenance System (DROMAS) for Dar es Salaam – **Tanzania**
- Planning & Supervision of the Construction of Infrastructure Measures - Serengeti National Park - **Tanzania**
- Technical Assistance for Improving Rural Access in Tanzania (IRAT) – **Tanzania**
- An Investigation into the Impact on Social Inclusion of HVT Corridors, and Solutions to Identifying and Preventing Human Trafficking – **Tanzania** and **Uganda**
- Technical Assistance (TA) of Ethiopian Roads Authority (ERA) Road Research Center (RRC)- **Ethiopia**
- Pre-feasibility study for Nairobi Beltway PPP Project- **Kenya**



WEST AFRICA

- Development of State Policy Framework for Rural Roads Management & Finance in Adamawa, Enugu, Imo, Niger and Osun under the Second Rural Access and Mobility Project (RAMP 2) – **Nigeria**
- Road Management Institutional Development and Capacity Building Reforms in Kaduna State – **Nigeria**
- Development of a Road Safety Action Plan for Liberia 2018 to 2021 – **Liberia**
- Road Safety Policy Development and Prioritization – **Liberia**
- Technical and Operational Assistance to the Infrastructure Implementation Unit (IIU) – **Liberia**
- Review of Road Maintenance Management Systems in sub-Saharan Africa – Feeder Road Alternative Maintenance Programme (FRAMP) – **Liberia**
- Technical Assistance to the National Roads Authority – M&E Component – **The Gambia**
- Formulation study for support to Transport Sector including a feeder roads component – **The Gambia**
- Design and supervision of flood alleviation and solid waste disposal in 7 flooding hot spots – **The Gambia**
- Baseline Survey and Employment Impact Assessment of Infrastructure Investments – **Sierra Leone**
- Preparation of Transport Sector Research and Climate Change Strategy – **Ghana**

OUR PRODUCTS

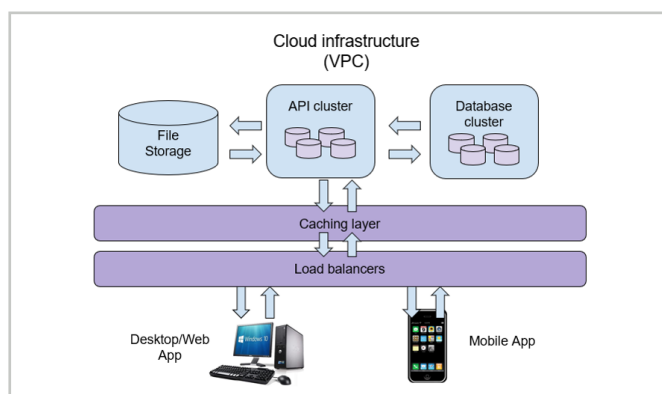
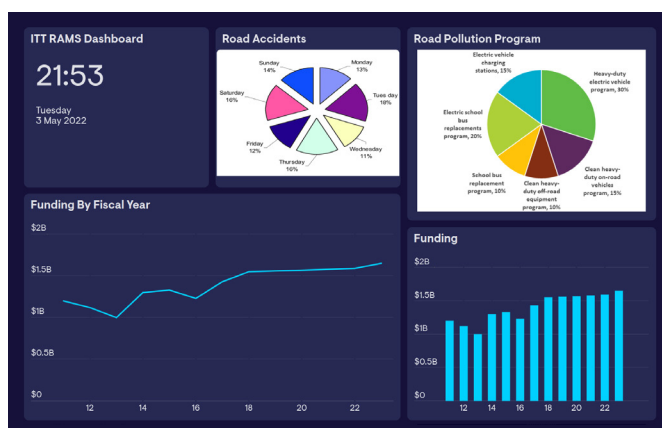


I.T. Transport's Road Asset Management System (ITT-RAMS)

ITT-RAMS is an asset management solution that enables a road authority to link strategic objectives to its planning, maintenance operations and investment decision making.

VALUE ADDITION

- Tailored for low-resource and developing-country environments
- Modular and scalable architecture – district to national level
- Integrates inventory, condition data, GIS, HDM-4, and maintenance records
- Supports data-driven planning, budgeting, and prioritisation
- User-friendly interface with local language and offline data collection
- Enables performance-based and output-based maintenance planning Provides real-time monitoring via GPS/GIS and mobile app integration
- Incorporates climate resilience indicators and risk mapping
- Aligned with ISO 55000, HDM-4, PIARC, and international best practices
- Full capacity building support – training, SOPs, and institutional strengthening
- Field-tested in multiple countries and continuously improved based on feedback



An **enabler** for
data-driven
decision making.



If you can drive
on it, **we can**
survey it.





I.T. Transport's Video Road Assessment System (VidRAS)

VidRAS is an International Road Assessment Programme (iRAP) accredited Inspection System, which provides a methodology and the software needed to perform iRAP surveys and road attribute coding. VidRAS has been developed by Road Safety Professionals for use by Road Safety Professionals. It is capable of being deployed on any road in the world.



SURVEY METHODOLOGY:

- Can be conducted on any road, in any condition, in any location
- No expensive or difficult to import specific survey vehicle required – VidRAS equipment is highly flexible and can be easily mounted to the vehicle itself
- High quality but low-cost equipment from the Experts in Intermediate Technology
- Tested in the toughest of environments, for thousands of kilometres

VidRAS - 20220306 - [132938384706060243_sample_project]

File Embed Chainage Help Camera Calibration Export

Thumbnail Option ☒ 20m ☐ 100m

1 2 Width 6 Length 10 Get Save

Image List

- 1.0+000
- 2.0+020
- 3.0+040
- 4.0+060
- 5.0+080
- 6.0+100
- 7.0+120
- 8.0+140
- 9.0+160
- 10.0+180
- 11.0+200
- 12.0+220
- 13.0+240

20m Back Next 100m Back Next Dropdown Detach Image Save

Grid Visible Grid Size ☒ 1 ☐ 2 ☐ 3 ☐ 4

Road Details Flow Speed Mid Block Roadside Intersections Vulnerable Road User (VRU) Additional

ROAD DETAILS AND CONTEXT

Coder Name

Road Survey Date

Road Name

Distance km (distance in 0.1km)

Latitude

Landmark

Carriageway Label

Coding Date

Image Reference (url of image)

Section

Length km

Longitude

Comments

VidRAS Road Attribute Coding Software Home Page

CODING SOFTWARE FACTS:

- Default and Automated Selections to save time and minimise Operator coding errors
- Ability to batch code enables significant time and labour-cost savings
- Flexible methods for data coding with choice of dropdown menus or radio button
- High Tech but Low cost – built with customer needs as the main priority
- Augmented measuring grid that can be turned on or off to assist with distance estimates
- Developed by Road Safety Professionals for use by Road Safety Professionals
- Technical support is available online, by phone and in person – we stand behind our products with confidence
- Developed for deployment in emerging markets/developing countries

45

YEARS IN
BUSINESS

itt

*Sustainable Transport
Infrastructure Solutions*

OFFICE ADDRESS:

I.T. Transport Ltd
Unit 5C Merryhills Enterprise Park
Park Lane, Wolverhampton
WV10 9TJ
United Kingdom

CONTACT INFORMATION:

✉ itt@ittransport.co.uk
☎ +44 (0)1902 283140
🌐 www.ittransport.co.uk
📱 IT Transport
✂ ITTransportUK
