



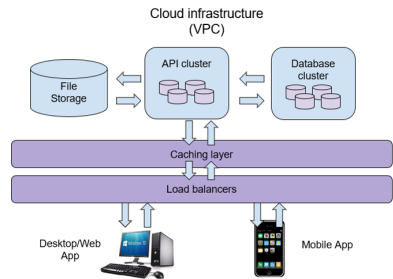
I.T. Transport's Road Asset Management System (ITT-RAMS)

ITT-RAMS is an asset management solution that enables a road authority to link strategic objectives to its planning, maintenance operations and investment decision making.

An **enabler** for **data-driven decision making**.

INFRASTRUCTURE

- System is behind a secure network (VPC)
- Uses docker containers.
- Database is a highly available MySQL cluster.
- Files stored in a secure file storage technology.
- Communication and sensitive data is encrypted.



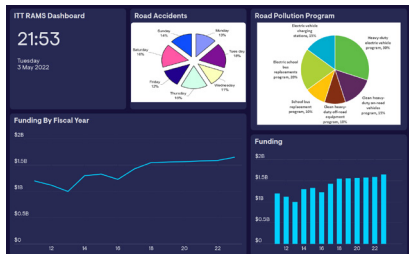
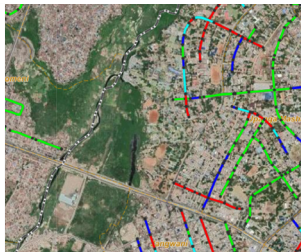
INPUT MODULES:

- Frontend and backend services.
- Backend API built using PHP 8.
- Desktop and mobile apps are built using Node JS with typescript.
- Apps are both web-based and native.



OUTPUT:

- + Tanzania Basemap
- + TAN Road Network
- TARURA Road Network
 - Road Network
 - Road Links
 - Road Nodes
- + Road Inventory
- Road Condition
 - Road Condition
 - SDI
 - ✓ IRI
- Legend: Good, Fair, Poor, Bad
- + Annual Road Maintenance Plan
- + Project/Program





itt

*Sustainable Transport
Infrastructure Solutions*

OFFICE ADDRESS:

I.T. Transport Ltd
Unit 5C Merryhills Enterprise Park
Park Lane, Wolverhampton
WV10 9TJ
United Kingdom

CONTACT INFORMATION:

Email: itt@ittransport.co.uk
Phone: +44(0)1902 652689
Website: www.ittransport.co.uk
LinkedIn: IT Transport
Twitter: ITTransportUK